

## Industrial Chemicals: Ethers on ZB-WAXplus

**Column:** Zebtron™ ZB-WAXplus™, GC Cap. Column 30 m x 0.53 mm x 1.00 μm, Ea

**Phase:** Polyethylene Glycol (PEG)

**Dimensions:** 30 meters x 0.53 mm x 1 μm

**Order No:** 7HK-G013-22

**Oven Profile:** 35 °C for 6 min to 200 °C at 20 °C/min hold 16 min.

**Carrier Gas:** Constant Flow Helium, 3 mL/min

**Injection:** Split 10:1 1 μL @ 200°C

**Detection:** Flame Ionization (FID) (220°C)

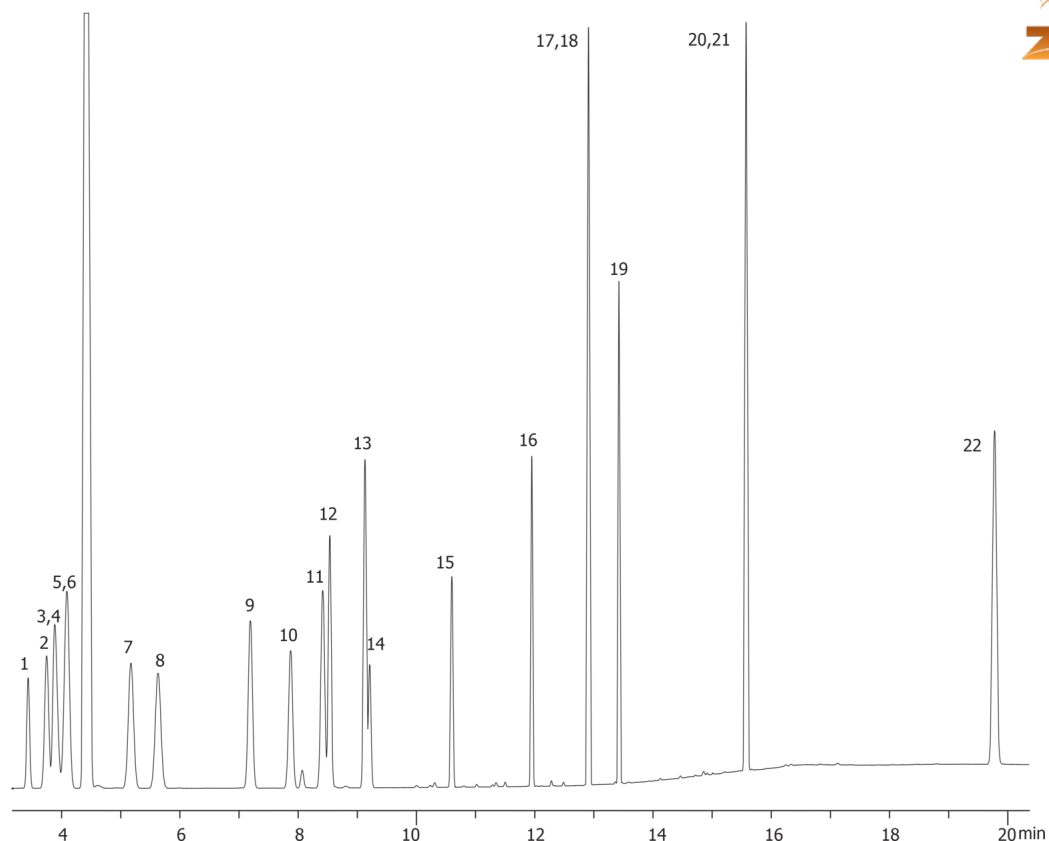
**Analyst Note:** Concentration per compound 250 ppm in Carbon disulfide



Products used in this application:



16237



## Industrial Chemicals: Ethers on ZB-WAXplus

### ANALYTES:

- |  |  |
|--|--|
| <b>1</b> Ethyl ether                             | <b>41</b> Ethyl ether                      |
| <b>2</b> Isopropyl ether                         | <b>42</b> 1,3-Dioxolane                    |
| <b>3</b> Ethyl vinyl ether                       | <b>43</b> Diethylene glycol dimethyl ether |
| <b>4</b> Methyl tert-butyl ether (MTBE)          | <b>44</b> 2-Butyl methyl ether             |
| <b>5</b> tert-Butyl ethyl ether                  |  |
| <b>6</b> 2-Butyl methyl ether                    |  |
| <b>7</b> Propyl ether                            |  |
| <b>8</b> n-Butyl ethyl ether                     |  |
| <b>9</b> Butyl vinyl ether                       |  |
| <b>10</b> Acetal                                 |  |
| <b>11</b> Tetrahydropyran                        |  |
| <b>12</b> Allyl ether                            |  |
| <b>13</b> Butyl ether                            |  |
| <b>14</b> 1,3-Dioxolane                          |  |
| <b>15</b> 1,4-Dioxane                            |  |
| <b>16</b> Epichlorohydrin                        |  |
| <b>17</b> Allyl glycidil ether                   |  |
| <b>18</b> Diethylene glycol dimethyl ether       |  |
| <b>19</b> Diethylene glycol diethyl ether        |  |
| <b>20</b> Triethylene glycol dimethyl ether      |  |
| <b>21</b> Diethylene glycol dibutyl ether        |  |
| <b>22</b> Di(ethyleneglycol) 2-ethyl hexyl ether |  |
| <b>23</b> Acetal                                 |  |
| <b>24</b> Epichlorohydrin                        |  |
| <b>25</b> Allyl ether                            |  |
| <b>26</b> Diethylene glycol diethyl ether        |  |
| <b>27</b> Butyl ether                            |  |
| <b>28</b> Propyl ether                           |  |
| <b>29</b> Butyl vinyl ether                      |  |
| <b>30</b> Ethyl vinyl ether                      |  |
| <b>31</b> Di(ethyleneglycol) 2-ethyl hexyl ether |  |
| <b>32</b> n-Butyl ethyl ether                    |  |
| <b>33</b> Methyl tert-butyl ether                |  |
| <b>34</b> Allyl glycidil ether                   |  |
| <b>35</b> Tetrahydropyran                        |  |
| <b>36</b> tert-Butyl ethyl ether                 |  |
| <b>37</b> Diethylene glycol dibutyl ether        |  |
| <b>38</b> 1,4-Dioxane                            |  |
| <b>39</b> Isopropyl ether                        |  |
| <b>40</b> Triethylene glycol dimethyl ether      |  |

