

HPLC Application

ID No.: 23352

Fast Organic Acids Analysis in Wine - Cab Sauv P

Column: Synergi[™] 4 μ m Hydro-RP 80 Å, LC Column 250 x 4.6 mm, Ea

Dimensions: 250 x 4.6 mm ID

Order No: 00G-4375-E0

Elution Type: Gradient

Eluent A: 20mM potassium phosphate, pH 1.5

Eluent B: Methanol

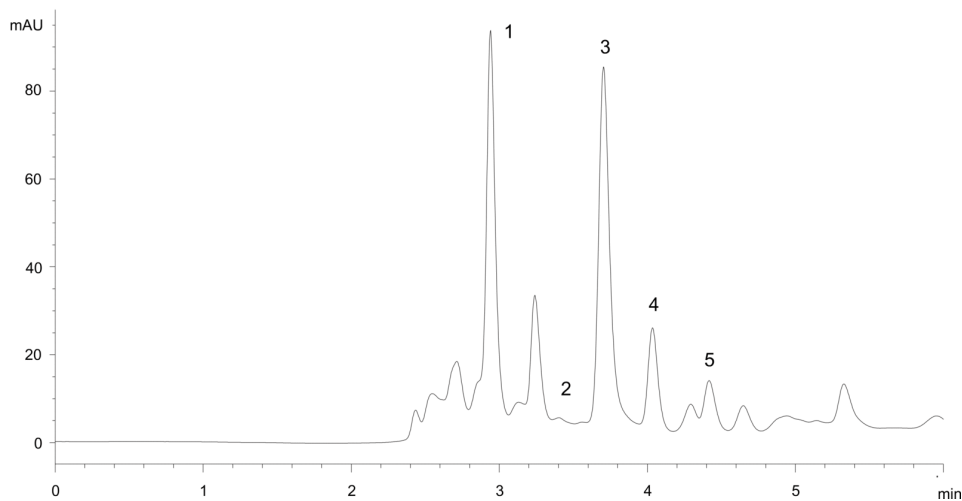
Gradient Profile:	Step No.	Time (min)	Pct A	Pct B
	1	0	100	0
	2	2.5	100	0
	3	2.6	70	30
	4	2.9	70	30
	5	3	100	0
	6	10	100	0

Flow Rate: 1 mL/min

Col. Temp.: 60 °C

Detection: UV-Vis Abs.-Variable Wave.(UV) @ (ambient)

App ID 23352



Fast Organic Acids Analysis in Wine - Cab Sauv P

ANALYTES:

- 1** tartaric acid
- 2** malic acid
- 3** shikimic acid (interferent)
- 4** lactic acid
- 5** acetic acid
- 6** citric acid
- 7** succinic acid
- 8** lactic acid
- 9** citric acid
- 10** malic acid
- 11** tartaric acid
- 12** succinic acid
- 13** acetic acid
- 14** shikimic acid (interferent)

